

Arc adjustment

(All PGM adjustable heads are PRESET to approximately 40°)

1. Rotate the nozzle turret counterclockwise to the left stop.
2. Now, rotate the nozzle turret clockwise to the right stop. This is the fixed side of the arc. The nozzle turret must be held in this position for all arc adjustments.

To increase arc:

1. Insert the key end of the Hunter wrench into the adjustment socket on top of the sprinkler.
2. While holding the nozzle turret at the right stop, turn the wrench clockwise. (Note: all adjustments can be made with less than one full turn of the adjusting wrench.)
3. Wrench will stop turning when adjusted to the maximum arc (360°). Do not go past this stop.
4. Adjust to any arc between 40°-360°.

To decrease arc:

1. Insert the key end of the Hunter wrench into the adjustment socket.
2. While holding the nozzle turret at the right stop, turn the wrench counterclockwise.
3. Wrench will stop turning when adjusted to the minimum arc (40°). Do not go past this stop.
4. Adjust to any arc between 40°-360°.

Radius adjustment

To decrease radius:

1. Turn nozzle-retainer/range-adjustment screw clockwise. This can reduce radius up to 25%.
2. If an even smaller radius is desired, install a smaller nozzle. This will affect precipitation rate.

To increase radius:

1. Turn nozzle-retainer/range-adjustment screw counterclockwise.
2. If larger radius is desired, install larger nozzle. This will affect precipitation rate.

Precipitation rate adjustment

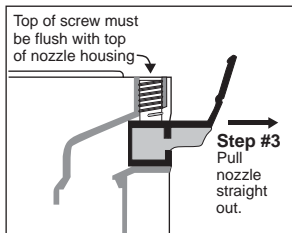
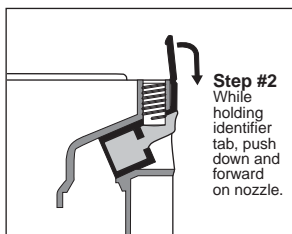
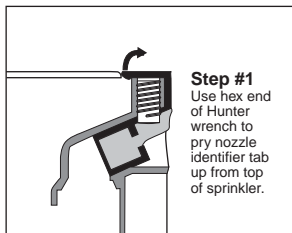
To increase precipitation:

1. Remove existing nozzle.
2. Replace with larger size.
3. Adjust radius.

To decrease precipitation:

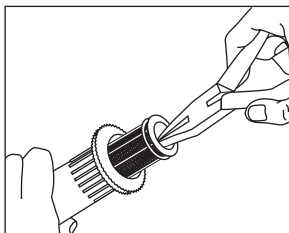
1. Remove existing nozzle.
 2. Replace with smaller size.
 3. Adjust radius.
- Note: Undamaged nozzles are reusable.
Nozzle sets are also recyclable.

Nozzle Removal

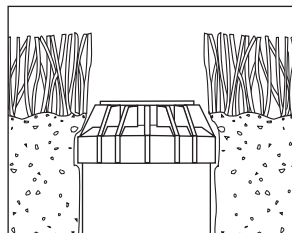


- If the top of the screw is below the top of the turret, the screw must be turned counter-clockwise until it is flush with the top before removing the nozzle.
- If the screw is flush with the top of the nozzle turret, the nozzle can be installed by reversing the steps above.

Removing Filter Screen for Cleaning



Proper Installation Height



PGM Nozzle Performance Data

Nozzle	Pressure PSI	Radius ft.	Flow GPM	Precip in/hr	
				■	▲
.50	30	15'	0.42	0.36	0.41
	40	16'	0.50	0.38	0.43
	50	17'	0.58	0.39	0.45
.75	30	17'	0.64	0.43	0.49
	40	18'	0.75	0.45	0.51
	50	18'	0.85	0.51	0.58
1.0	30	19'	0.85	0.45	0.52
	40	20'	1.0	0.48	0.56
	50	20'	1.1	0.53	0.61
1.5	30	23'	1.3	0.47	0.55
	40	24'	1.5	0.50	0.58
	50	25'	1.7	0.52	0.60
2.0	30	25'	1.7	0.52	0.60
	40	26'	2.0	0.57	0.66
	50	27'	2.3	0.61	0.70
3.0	30	28'	2.5	0.61	0.71
	40	30'	3.0	0.64	0.74
	50	30'	3.4	0.73	0.84

Data represent test results in zero wind. Adjust for local conditions. Radius may be reduced up to 25% with adjustment screw (this may alter the uniformity of spray pattern). For information on testing standards and precipitation rate calculations, see Hunter Irrigation Products catalog. **Optimum performance is shown in bold type.**

The average precipitation rate is approximately .45" per hour for a 180° arc sprinkler (actual precipitation may vary and should be calculated).

PGM Nozzle Performance Data – Metric

Nozzle	Pressure Bars	kPa	Radius m	Flow l/min	Precip mm/hr		
					■	▲	
.50	2.1	206	4.6	0.10	1.6	9	11
	2.8	275	4.9	0.11	1.9	10	11
	3.4	344	5.2	0.11	1.9	10	11
.75	2.1	206	5.2	0.15	2.4	11	13
	2.8	275	5.5	0.17	2.8	11	13
	3.4	344	5.5	0.19	3.2	13	15
1.0	2.1	206	5.8	0.19	3.2	12	13
	2.8	275	6.1	0.23	3.8	12	14
	3.4	344	6.1	0.25	4.2	13	16
1.5	2.1	206	7.0	0.30	4.9	12	14
	2.8	275	7.3	0.34	5.7	13	15
	3.4	344	7.6	0.39	6.4	13	15
2.0	2.1	206	7.6	0.39	6.4	13	15
	2.8	275	7.9	0.45	7.6	14	17
	3.4	344	8.2	0.52	8.7	15	18
3.0	2.1	206	8.5	0.57	9.5	16	18
	2.8	275	9.1	0.68	11.4	16	19
	3.4	344	9.1	0.77	12.9	18	21

Note: All precipitation rates calculated for 180 degree operation.
For the precipitation rate for a 360 degree sprinkler, divide by 2.